



# MAiD: South West LHIN Current State

Julie Campbell, MN, MBA, NP  
MAiD Navigator, South West LHIN

# MAID Deaths in Ontario: As of July 31, 2018

**Total MAID Deaths:** 1848 patients have received MAID in Ontario.<sup>1</sup> Based on the current frequency, MAID is tracking to represent ~1% of all deaths in the province.<sup>2</sup>

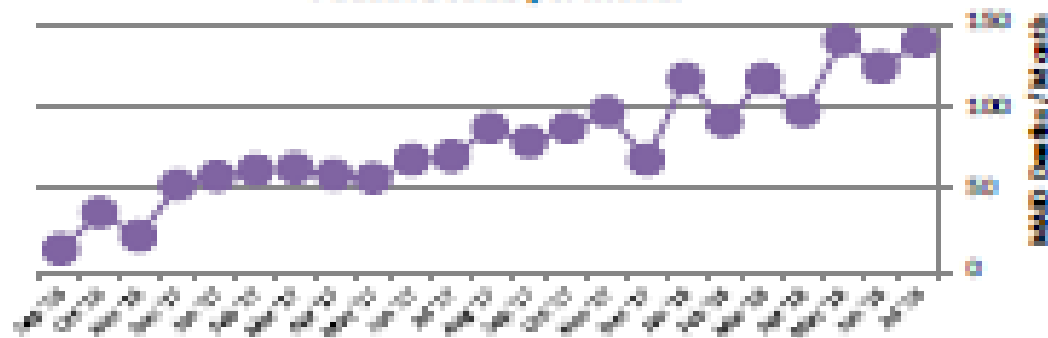
## Breakdown of Deaths

1847 clinician administered

1 patient administered

Average Increase in MAID deaths / month: 10%

### Patient Deaths per Month



## Provider Information

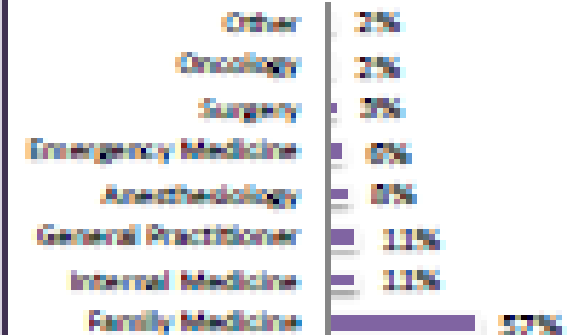
- 334 unique physicians providers
- 18 unique NPs providers

Clinician Providers

- 113 hospitals providers
- This covers 47% of Ontario hospitals.<sup>3</sup>

Facility Providers

### Breakdown, by Clinician Specialty



## Patient Demographics

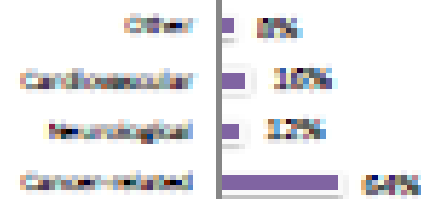
### Age

Youngest age to receive: 22  
Average age to receive: 74  
Oldest age to receive: 105

### Gender

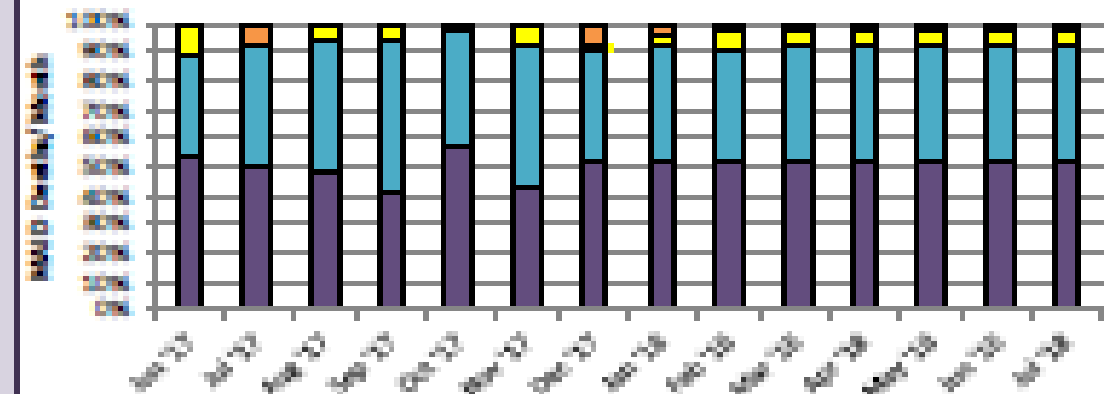
Male: 51%  
Female: 49%

### Breakdown, by Underlying Cause



## Health Care Setting

### Breakdown, by Health Care Setting



<sup>1</sup> In 2017, MAID accounted for approximately 1 out of every 55

# MAID Deaths per LHIN

The Office of the Chief Coroner amended their data collection intake form on August 1, 2017 and as a result, is able to break down deaths by LHIN as of that date. Between August 1, 2017 and July 31, 2018, 1231 MAID deaths occurred across Ontario.

**Key Findings:**

**Total number of MAID deaths per LHIN<sup>1</sup>:**

- North West had the lowest number of MAID deaths (32 total MAID deaths); and,
- Toronto Central had the highest number of MAID deaths (157 total MAID deaths) during this period.

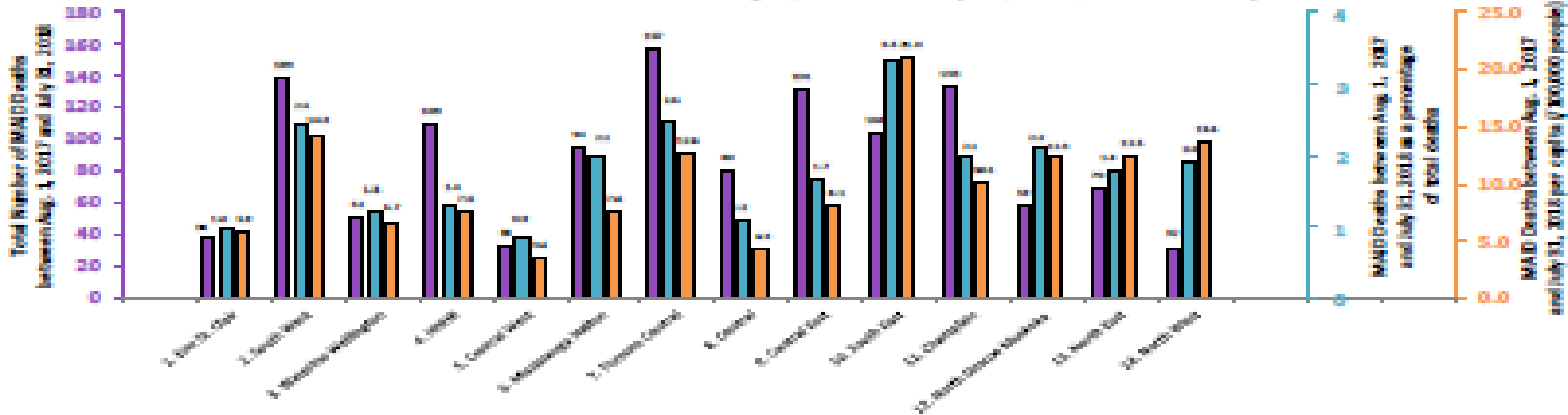
**MAID deaths as a percentage of total deaths per LHIN<sup>2</sup>:**

- In Central West, MAID deaths represent 0.9% of all deaths; and,
- In South East, MAID deaths represent 3.5% of all deaths.

**MAID deaths per capita<sup>3</sup>:**

- Central West had the lowest number of MAID deaths per capita (3.6 MAID deaths per 100,000 people); and
- South East had the highest number of deaths per capita (21.0 MAID deaths per 100,000 people) during this period.

Total Number of MAID Deaths between Aug. 1, 2017 and July 31, 2018, breakdown by LHIN



<sup>1</sup>Data provided by the office of the Chief Coroner of Ontario and covers the period from August 1, 2017 – July 31, 2018.  
<sup>2</sup>Data about the number of total population size and number of deaths per LHIN provided by the [Ontario, State of Health Statistics](#).  
<sup>3</sup>Data about the number of total population size per LHIN provided by the Health Analytics Branch and was based on the 2016 Census, Statistics Canada.

## MAiD Navigator Role within the South West

In response to the Ministry mandate and the growing need the South West LHIN hired a MAiD Navigator to..

- To facilitate the MOHLTCs mandate to develop a local/regionalized system for MAiD.
- Develop and maintain **smooth pathways for patients** and families to access MAiD services. Links to the provincial CCS program, coordination, navigation and education for patients as well as assistance in finding witnesses.
- Build clinician capacity through education and support of clinicians interested in participating in MAiD. Develop a community of practice, mentorship, share expertise and tools with respect to MAiD and build a comprehensive clinician registry.
- Construct communication channels internally and externally to ensure patient centered, comprehensive care and appropriate feedback loops.
- Develop relationships with organizations (i.e., Hospitals, FHT, CHC's etc.) to support seamless patient care and clinician supports.

## Current State: Assessors and Providers in the South West

- **Many (~ 50? More?) current assessors (NP's and Physicians)**
  - Count used to be critically low – now many Physicians willing to complete assessment with support- though often only for their own patients.
  - Opportunity for this number to increase over time
- **Still only ~ 20 unique MAiD Providers**
  - South West LHIN working towards supporting willing NP's to be Providers over the next months
  - Mentorship programs (OCFP, SWLHIN) emerging for interested clinicians

### Limitations:

- Confidentiality
- Fear of reprisal
- Remuneration (NPs all work outside of regular roles, MDs no specific billing codes)
- Administrative support needs (+ paperwork to do and unfamiliarity with changing reporting needs).

## System Improvements

- By the nature of the population accessing MAiD, patients move between settings towards end of life (home, hospital, Residential hospice, Long Term Care). We need to reduce silos and enhance communication.
- The LHIN can support when organizations are looking to implement policies and practices related to MAiD to ensure integration within the larger system and to provide any lessons learned that could support development.
- Forms repository. The LHIN provides a form repository for clinician aids related to MAiD. This supports transitions between organizations and providers and aids in communication.
- MAiD tracking software is near completion. We can assist with sharing stats specific that may assist with future quality improvements.
- One Number

# MEDICAL ASSISTANCE IN DYING (MAID)

Contact information for primary care providers

TEL: 519-637-4872 or 1-833-388-7331

FAX: 519-637-4873 or 1-833-388-7383

EMAIL: [sw.maid@lhins.on.ca](mailto:sw.maid@lhins.on.ca)




## How we can help

- Coordination of primary and secondary assessors
- Support and mentorship for physicians and nurse practitioners who are, or would like to be, involved in assessing or providing MAID in their communities
- Forms repository
- Nursing and pharmacy support coordination
- Links to community supports for families

South West **LHIN**

Care coordination service:   
**MEDICAL ASSISTANCE IN DYING**

If you are thinking about medical assistance in dying, we can help inform you about your potential options, and provide links to community supports 

Contact  us at

TEL: **519-637-4872** or **1-833-388-7331**  
FAX: **519-637-4873** or **1-833-388-7383**  
EMAIL: [sw.maid@lhins.on.ca](mailto:sw.maid@lhins.on.ca)



South West **LHIN**



**MEDICAL ASSISTANCE IN DYING (MAiD)**

TEL: **519-637-4872**  
TOLL FREE: **1-833-388-7331**  
EMAIL: [sw.maid@lhins.on.ca](mailto:sw.maid@lhins.on.ca)

South West Local Health Integration Network (LHIN) • [southwesthin.on.ca](http://southwesthin.on.ca) • 1-800-473-2222





## Connections and resources

### Provincial Care Coordination Service

- 1-866-286-4023
- 24/7 365 days per year
- Patient information, clinician support, links to regional resources

### South West LHIN

- One number for clinicians – questions, advice, navigation, mentorship opportunities etc. 519-637-4872 OR 1-833-388-7331
- [julie.campbell@lhins.on.ca](mailto:julie.campbell@lhins.on.ca)